



ABOUT J.L. INDUSTRIES, INC.:

Since 1947 J.L. Industries has led the way in fire protection and other specialty products for commercial construction. We combine a large selection of products with quality workmanship, which meet the highest standards in the marketplace. We offer excellent service, and the shortest average lead times in the industry. The technical training of our Customer Service staff enables us to meet your custom fabrication needs. With our affiliates, Samson Products, Inc. and Air Louvers, Inc. in Commerce, CA, and Hiawatha Inc. in Minneapolis, we offer the largest capacity of in-stock products. Our involvement with such organizations as Door and Hardware Institute (DHI), Construction Specifiers Institute (CSI) and the National Association of Fire Equipment Distributors (NAFED), enables us to remain at the forefront of industry requirements and innovations.

FIRE-FX OPTION FIRE RATED EXTINGUISHER CABINETS

An Industry First, U.S. Patent No. 5,171,079

In 1991, J.L. Industries introduced Fire-Rated Extinguisher Cabinets and Valve Cabinets for use in fire-rated walls. J.L.'s specially designed and patented **Fire-FX™ Option** for cabinets are built to meet building code specifications for fire-rated wall situations. Warnock Hersey has certified and listed J.L.'s **Fire-FX™ Option** for 1-hour and 2-hour combustible and non-combustible wall systems*. The **Fire-FX™ Option** is available on our Cavalier, Ambassador, Cosmopolitan, Panorama, Clear Vu, Continental, Embassy and certain Academy Series cabinets.

To determine wall opening and wall depth needed, consult series tables on pages 4, 6, 8, 9 and 11 for details. For **Fire-FX™ Option**, add the following to the W, H and D dimensions listed in the tables: For 1800, 1000, 1500, 2500 and 4500 series cabinets add 1" (2.5cm) to the W dimension, 1 1/8" (2.9cm) to the H dimension and 7/8" (2.2cm) to the D dimension; for 2000, 3000, 4000 and 8000 series cabinets add 1" (2.5cm) to the W dimension, 1 1/8" (2.9cm) to the H dimension, and 5/8" (1.6cm) to the D dimension. Or, ask for our separate Detail & Submittal sheets for these models.

To order or specify, add **Fire-FX™** suffix to the seven digit J.L. Model number. For example, if you want an Ambassador 1017F10 with the **Fire-FX™ Option**, ask for the 1017F10 FX.

The **Fire-FX™ Option** fire-rated cabinet tub is not available on trimless and surface mount cabinets. **Fire-FX™ Option** is available on some aluminum door and trim cabinets, priced on application. **Fire-FX™** will in most cases, approximately double the cabinet shipping weight.

The **Fire-FX™ Option** eliminates:

- The costly need to line the wall opening cavity with fire rated material.
- Guesswork as to whether the fire barrier has been compromised by the above procedure.

SPECIFICATIONS

Furnish fire-rated cabinet with **Fire-FX™ Option** manufactured by J.L. Industries of Bloomington, MN. Cabinet to be fabricated in accordance with the Warnock Hersey certified design and shall carry the Warnock Hersey label for 1-and 2-hour combustible and non-combustible walls*.

Cabinet to be fabricated in accordance with UBC 43-6 (ASTM E814-88) to measure fire resistive performance.

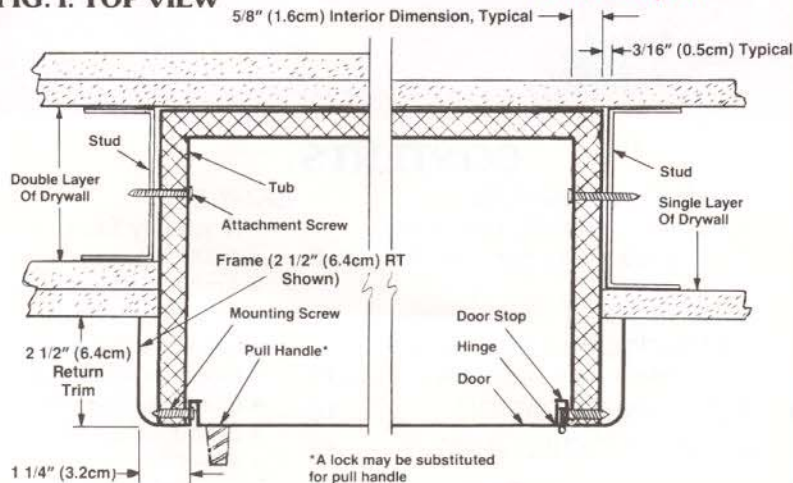


WHI Test Nos.:
• 631-021201
• 631-021202



Cosmopolitan 1037F10FX
with **Fire FX™ Option**

FIG. I: TOP VIEW



* For applicable restrictions, see the **Fire-FX™ Option** Detail and Submittal Sheet and the installation instructions provided with the product.



ADAC OPTION UNIQUE 4" (10.2cm) PROJECTING CABINET TRIM COMPLIES WITH A.D.A. CODES

An Industry First...

The *Americans with Disabilities Act (A.D.A)* of 1990 mandates that cabinets or other accessories not extend into corridor areas more than 4" (10.2cm).

All J.L. Industries fire equipment cabinets which meet this criteria are highlighted in blue throughout our catalog. This includes the following models:

- Ambassador, Academy, Cosmopolitan, Panorama and Continental cabinets with trim projections for trimless, flat trim, 1 1/4" (3.2cm), 1 1/2" (3.8cm), 2 1/2" (6.4cm) with the standard pull handle, and 4" (10.2cm) projection with the flush cup pull.
- All standard Cavalier and Embassy models.
- Clear Vu models with flat trim only.



Ambassador 1012F10

In 1993 J.L. Industries, Inc. introduced a unique cabinet design featuring a 4" (10.2cm) projecting trim with a flush cup pull handle. This was created to allow for installation of our popular 1000 size cabinet into walls as thin as 2 1/8" (5.4cm), and still meet the A.D.A. projection criteria.

All cabinets with a "2" as the fourth character of the model number include this 4" (10.2cm) projecting trim with the flush cup pull handle. (ex. Ambassador 1012F10) It is important to note, however, that most other J.L. cabinets also meet the projection require

ment. The primary factor for selecting semi-recessed cabinets remains the available depth of the wall. When selecting a cabinet model number with a "2" in the fourth position, you will automatically receive the flush cup pull as well.

The **ADAC** cabinet with 4" return trim was designed to offer an additional choice, allowing for semi-recessing into relatively thin walls, and yet still comply with the new projection requirements.

Most other cabinets are also available with the flush cup pull. Contact factory for details.

If your wall depth is greater than 2 1/8", other cabinets-noted throughout this catalog in royal blue-may also be used.